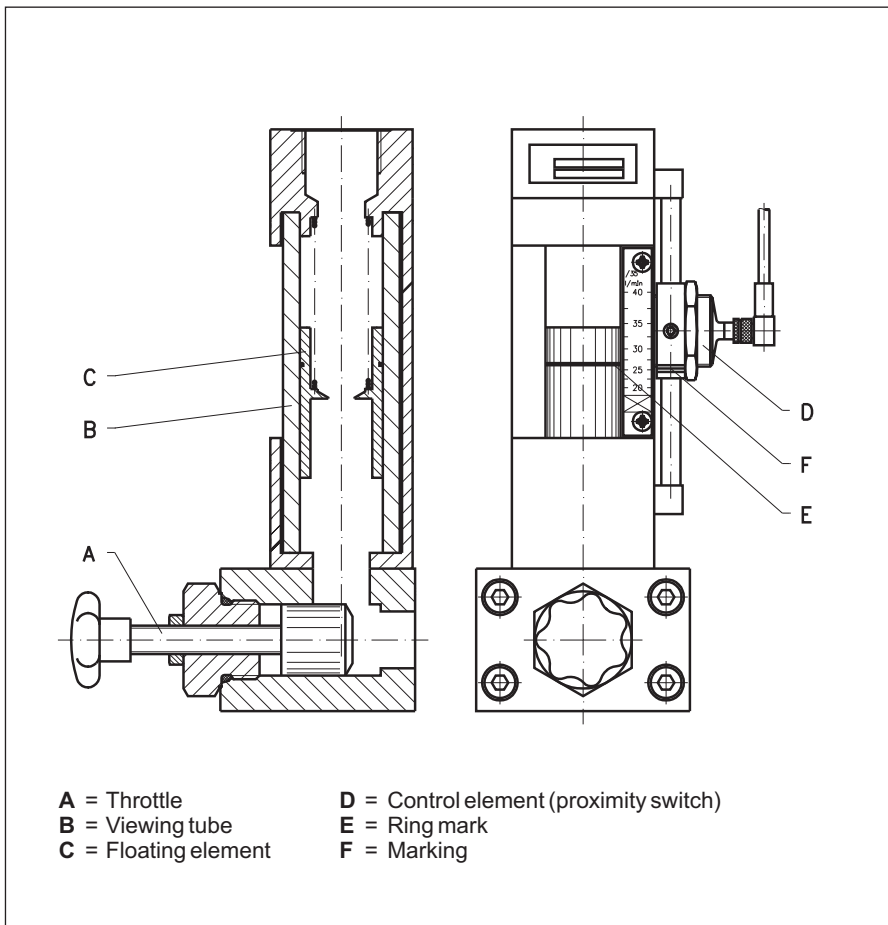
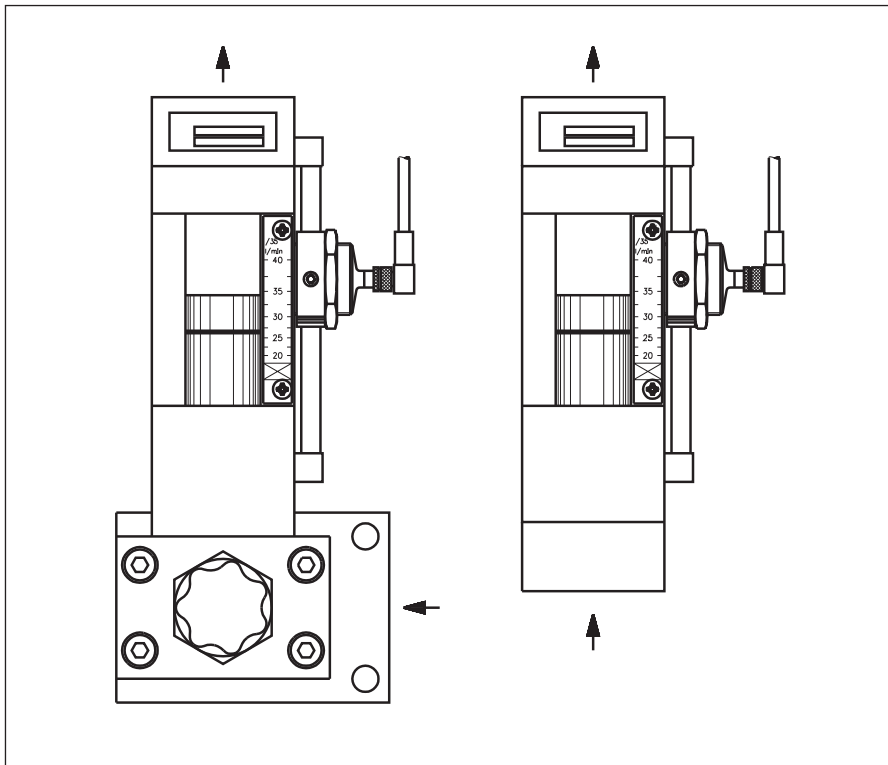
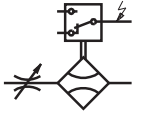




- Subject to modifications -



Volume flow indicator KUI-M



Volume flow measuring device with throttle and stop valve in bloc design

Use:

With oil lubrication systems

- Assembly in rows within smallest spaces available
- optical and electrical monitoring of the volume flow
- progressively adjustable volume flow
- In case of one-digit volume flow indicators two control elements can be mounted at maximum (to the right and to the left). As a result, two limiting values can be identified.
- Control elements with functional display (LED)

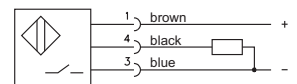
Technical data:

Operating pressure at max.: 16 bar
 Temperature: -10 ... +90 °C
 Mounting position: vertically ±5°
 Sealing material: FPM (Viton)
 Differential pressure between inlet and outlet: approx. 0,5 bar

Electrical data proximity switch N1:

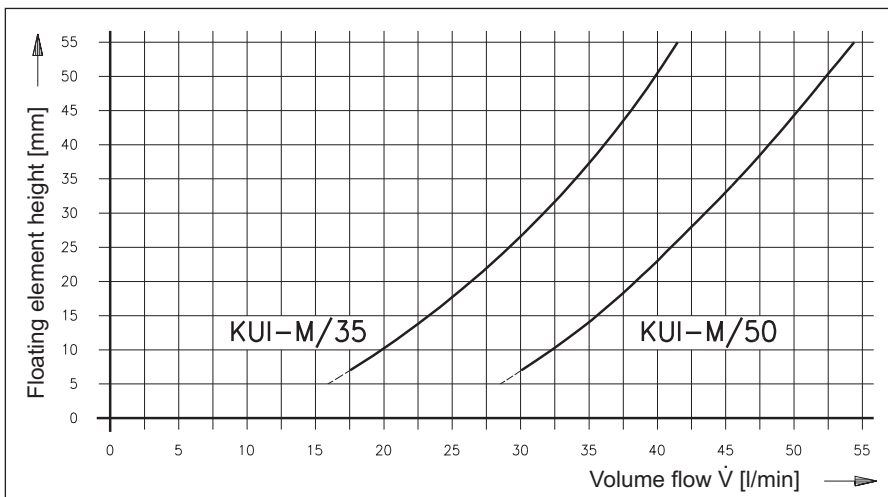
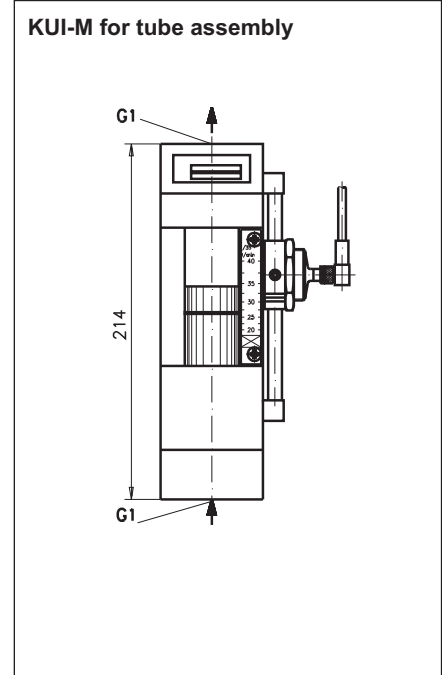
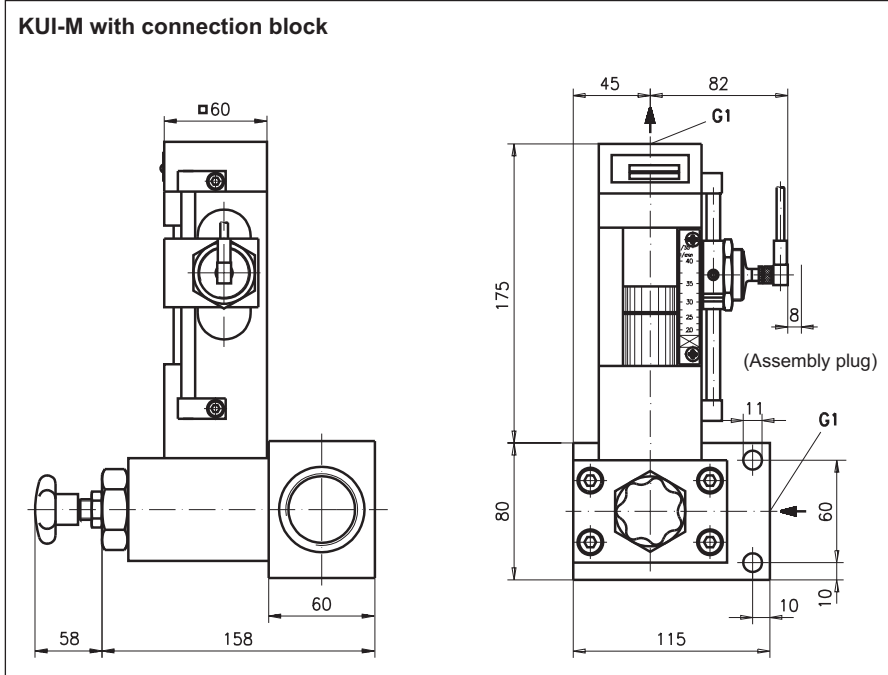
Voltage: 24 VDC
 Connector: PNP closer
 Plug: Cable 5m 3x0,25 with LED

Connection diagram:



Setup and functioning:

Within a cylindrically shaped viewing tube "B" a floating element "C" fitted with an aperture boring is moved. When being flown from bottom to top, the floating element "C" adjusts to a certain height, thus optically showing the volume flow by means of a ring mark on the scale. The position of the floating element can be electrically monitored via the proximity switch "D". The proximity switch "D" will be actuated when the ring mark "E" of floating element "C" has passed the marking "F". In case of an increased volume flow the switching range of the proximity switch "D" will not be exceeded.



Purchase-designation:

Volume flow indicator



Assembly mode	Display scale	Display range	electric monitoring
Tube assembly G1, without throttle (R)	in l/min (A)	20 - 40 [l/min] (35)	Add-on for proximity switch (without prox. switch) (N0)
one-digit connection board, with throttle (1)	without (e.g. for special scale) (0)	30 - 55 [l/min] (50)	Add-on with proximity switch 24 VDC (N1)
others upon request		others upon request	without (0)

Proximity switch-special manufacture:

PNP closer; 10-50 VDC

Purchase-no.: 913.900-17

Cable socket:

Purchase-no.: 913.404-24

Purchase-example:

For a one-digit volume flow indicator with connection board and display scale A, display range 50 and electrical monitoring capability N1

Purchase-designation:

KUI-M / 1 / A / 50 / N1

- Subject to modifications -